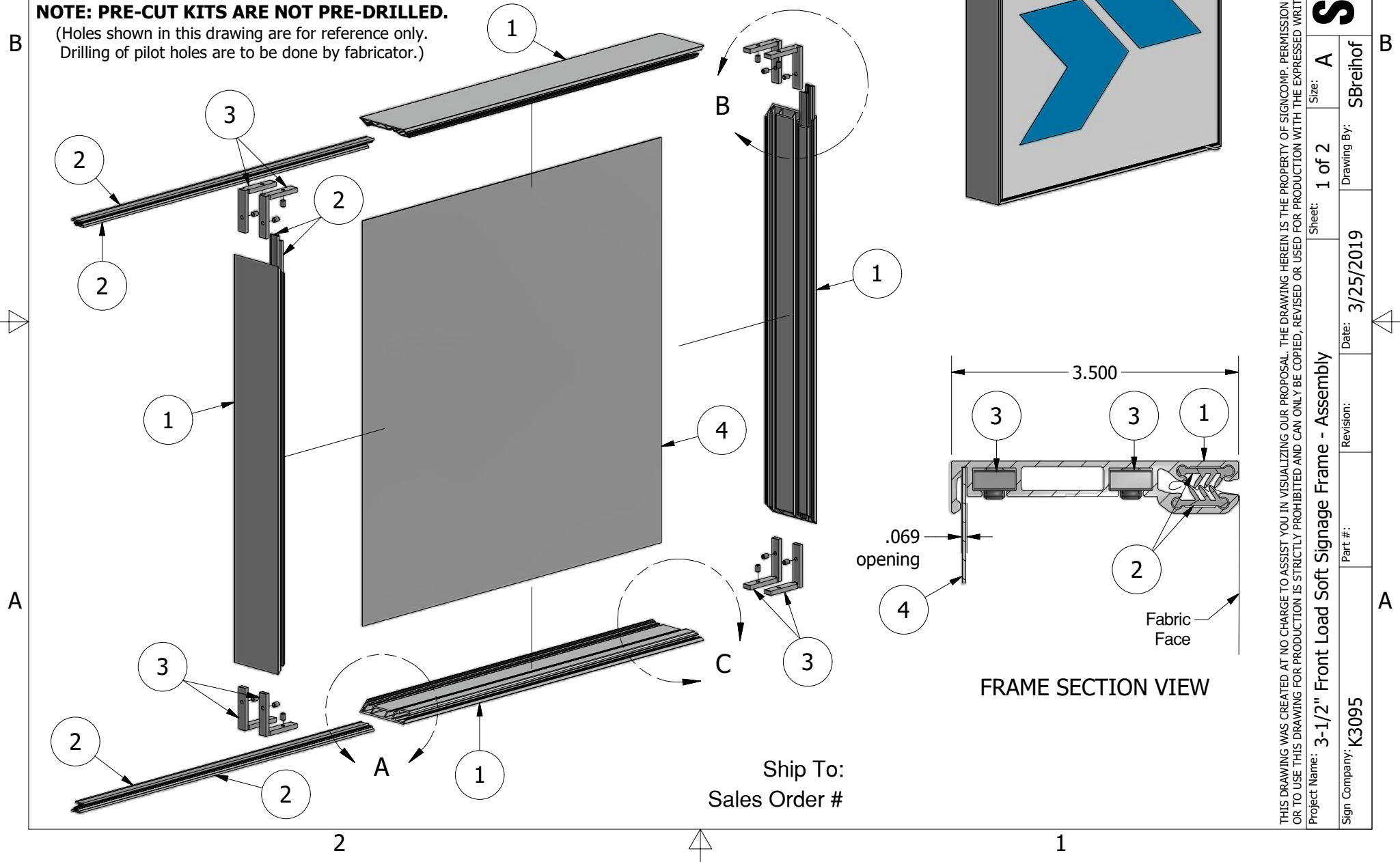


PARTS LIST

ITEM	PART #	DESCRIPTION	NOTES
1	3095	3-1/2" Front Load Soft Signage Frame	All Sides
2	3098	Front Load Grip Strip	Two (2) per side
3	5895	Angle Assembly	Two (2) per frame corner
4		Optional Back	By Other
5	5897	Front Load Soft Signage Pull Tab Assembly	

NOTE: PRE-CUT KITS ARE NOT PRE-DRILLED.

(Holes shown in this drawing are for reference only. Drilling of pilot holes are to be done by fabricator.)



Ship To:
Sales Order #

FRAME SECTION VIEW

THIS DRAWING WAS CREATED AT NO CHARGE TO ASSIST YOU IN VISUALIZING OUR PROPOSAL. THE DRAWING HEREIN IS THE PROPERTY OF SIGNCOMP. PERMISSION TO COPY OR REVISE THIS DRAWING OR TO USE THIS DRAWING FOR PRODUCTION IS STRICTLY PROHIBITED AND CAN ONLY BE COPIED, REVISED OR USED FOR PRODUCTION WITH THE EXPRESSED WRITTEN PERMISSION OF SIGNCOMP.

Project Name: 3-1/2" Front Load Soft Signage Frame - Assembly

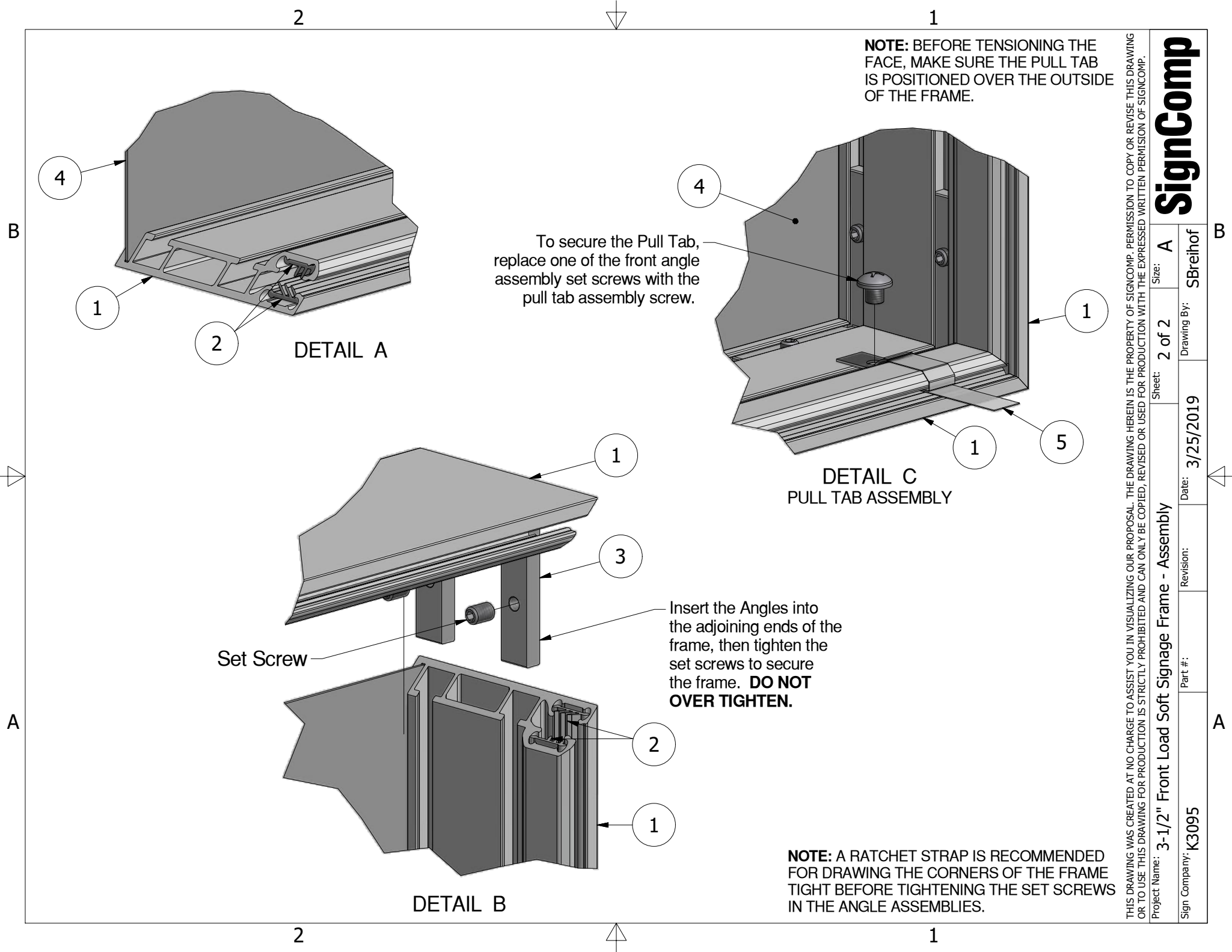
Sign Company: K3095

Revision: 3/25/2019

Drawing By: SBreihof

Sheet: 1 of 2

SignComp



NOTE: BEFORE TENSIONING THE FACE, MAKE SURE THE PULL TAB IS POSITIONED OVER THE OUTSIDE OF THE FRAME.

To secure the Pull Tab, replace one of the front angle assembly set screws with the pull tab assembly screw.

Insert the Angles into the adjoining ends of the frame, then tighten the set screws to secure the frame. **DO NOT OVER TIGHTEN.**

NOTE: A RATCHET STRAP IS RECOMMENDED FOR DRAWING THE CORNERS OF THE FRAME TIGHT BEFORE TIGHTENING THE SET SCREWS IN THE ANGLE ASSEMBLIES.

Project Name: 3-1/2" Front Load Soft Signage Frame - Assembly		Revision:	Date: 3/25/2019	Sheet: 2 of 2	Size: A	Part #: SBreihof
Sign Company: K3095		<h1 style="text-align: center;">SignComp</h1>				

THIS DRAWING WAS CREATED AT NO CHARGE TO ASSIST YOU IN VISUALIZING OUR PROPOSAL. THE DRAWING HEREIN IS THE PROPERTY OF SIGNCOMP. PERMISSION TO COPY OR REVISE THIS DRAWING OR TO USE THIS DRAWING FOR PRODUCTION IS STRICTLY PROHIBITED AND CAN ONLY BE COPIED, REVISED OR USED FOR PRODUCTION WITH THE EXPRESSED WRITTEN PERMISSION OF SIGNCOMP.